

# TECHNICAL DATA SHEET

**Division:**  
Lighting

**Department:** Design  
and Development

**Document Number:** TD 0909273

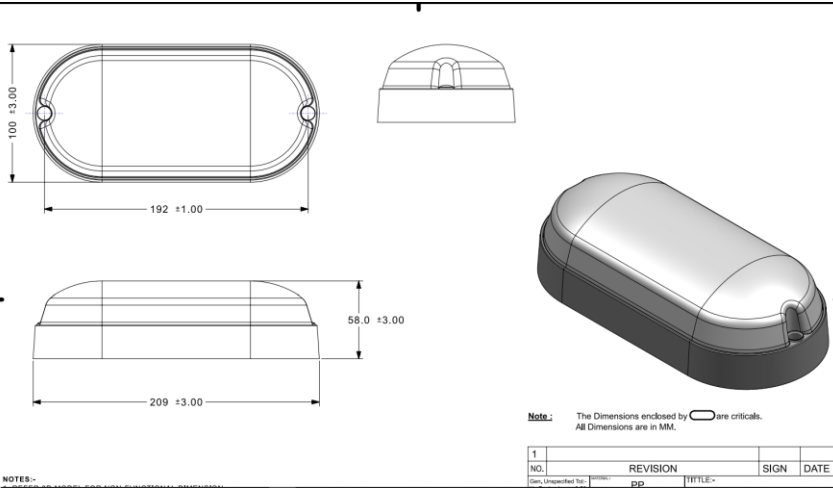
Page 1 of 3

Revision: R02

Issue No. 1

Date: 13/02/2024

Issue Date:02-05-2018



DIMENSIONS SHOWN ARE FOR INSTALLATION REFERENCES ONLY AND WILL HAVE TOLERANCE ±3mm UNLESS OTHERWISE SPECIFIED

### GENERAL:

This luminaire comprises of Plastic housing and diffuser. This luminaire is recommended for illuminating area lighting, monument lighting, retail shops etc.

PRODUCT DESCRIPTION	**NOMINAL WATTAGE (W)	CCT (K)	CRI	VOLTAGE (V)	**MAINS CURRENT (A) ± 10 %	*APPROX WT (KG)± 10 %
BLKD-XELLO-20W-CDL	20	6500	>80	220-240	0.1	0.153
BLKD-XELLO-20W-WW	20	3000	>80	220-240	0.1	0.153

\*ONLY FOR STRUCTURAL/MOUNTING DESIGN CONSIDERATION

\*\*RATED SYSTEM WATTAGE AND CURRENT WILL HAVE TOLERANCE AS PER IS 16104: 2012

Internal TITLE: XELLO 20W LED BULKHEAD - SAKAR	TYPE: Bulk Head	CUSTOMER REFERENCE:	STAMP: <b>(Controlled Copy) Approved</b>
PREPARED BY Chandan Swain	CHECKED BY Ramesh.unhavane	APPROVED BY Ramesh.unhavane	

- Note: 1 AS EFFORTS ARE ON CONSTANTLY TO IMPROVE THE DESIGN AND METHODS OF MANUFACTURE OF THE PRODUCT, THE PRODUCT SUPPLIED MAY DIFFER IN DETAIL FROM THE DATA GIVEN HERE IN
2. THIS DRAWING & DESIGN IS THE PROPERTY OF CROMPTON GREAVES CONSUMER ELECTRICALS LTD. AND MUST NOT BE COPIED OR LENT WITHOUT THEIR PERMISSION IN WRITING
- 3.THE "APPROVED" INDICATED THAT IT IS A CONTROL COPY
4. DIMENSION SHOWN ARE FOR INSTALLATION REFERENCE ONLY AND IN MM WITH TOLERANCE OF +/-3mm UNLESS OTHERWISE SPECIFIED



Crompton Greaves Consumer  
Electricals Ltd.

# TECHNICAL DATA SHEET

FORM No. DSG/FR/08

Doc Classification:  
Restricted-4

Division:  
Lighting

Department: Design  
and Development

Document Number: TD 0909273

Revision: R02

Date: 13/02/2024

Page 2 of 3

Issue No. 1

Issue Date:02-05-2018

## MATERIAL SPECIFICATIONS:

HOUSING	PP
DIFFUSER	PP
HOUSING CAP	RUBBER

## ELECTRICAL PARAMETERS:

Rated Voltage (V)	220-240Vac
Frequency (Hz)	50Hz
Current (A) @ 230V	0.1
Wattage (W) @230V	20W
P.F.	≥ 0.9
I THD@230V AC	< 20%
Lumen	1600 -CDL***
Surge	Upto 4kV
High Voltage Withstand	Upto 440V@2hrs

\*\*\*RATED LUMENS WILL HAVE TOLERANCE AS PER IS 16104: 2012/ IS16105 :2012

Internal TITLE: XELLO 20W LED BULKHEAD - SAKAR	TYPE: Bulk Head	CUSTOMER REFERENCE:	STAMP: <b>(Controlled Copy) Approved</b>
PREPARED BY Chandan Swain	CHECKED BY Ramesh.unhavane	APPROVED BY Ramesh.unhavane	

Note: 1 AS EFFORTS ARE ON CONSTANTLY TO IMPROVE THE DESIGN AND METHODS OF MANUFACTURE OF THE PRODUCT, THE PRODUCT SUPPLIED MAY DIFFER IN DETAIL FROM THE DATA GIVEN HERE IN  
 2. THIS DRAWING & DESIGN IS THE PROPERTY OF CROMPTON GREAVES CONSUMER ELECTRICALS LTD. AND MUST NOT BE COPIED OR LENT WITHOUT THEIR PERMISSION IN WRITING  
 3.THE "APPROVED" INDICATED THAT IT IS A CONTROL COPY  
 4. DIMENSION SHOWN ARE FOR INSTALLATION REFERENCE ONLY AND IN MM WITH TOLERANCE OF +/-3mm UNLESS OTHERWISE SPECIFIED



Crompton Greaves Consumer  
Electricals Ltd.

# TECHNICAL DATA SHEET

FORM No. DSG/FR/08

Doc Classification:  
Restricted-4

Division:  
Lighting

Department: Design  
and Development

Document Number: TD 0909273

Revision: R02

Date: 13/02/2024

Page 3 of 3

Issue No. 1

Issue Date:02-05-2018

## INSTALLATION:

IP PROTECTION	IP 54
MOUNTING	2NOS OF SCREW PROVIDED

## PRODUCT ORDERING CODE:

Product Description	Ordering Code
BULKHEAD 20W - CDL	BLKD-XELLO-20W-CDL
BULKHEAD 20W – WW	BLKD-XELLO-20W-WW

## SPARES ORDERING REFERENCE:

Product Description				

Internal TITLE: XELLO 20W LED BULKHEAD - SAKAR	TYPE: Bulk Head	CUSTOMER REFERENCE:	STAMP: <b>(Controlled Copy) Approved</b>
PREPARED BY Chandan Swain	CHECKED BY Ramesh.unhavane	APPROVED BY Ramesh.unhavane	

- Note: 1 AS EFFORTS ARE ON CONSTANTLY TO IMPROVE THE DESIGN AND METHODS OF MANUFACTURE OF THE PRODUCT, THE PRODUCT SUPPLIED MAY DIFFER IN DETAIL FROM THE DATA GIVEN HERE IN  
 2. THIS DRAWING & DESIGN IS THE PROPERTY OF CROMPTON GREAVES CONSUMER ELECTRICALS LTD. AND MUST NOT BE COPIED OR LENT WITHOUT THEIR PERMISSION IN WRITING  
 3.THE "APPROVED" INDICATED THAT IT IS A CONTROL COPY  
 4. DIMENSION SHOWN ARE FOR INSTALLATION REFERENCE ONLY AND IN MM WITH TOLERANCE OF +/-3mm UNLESS OTHERWISE SPECIFIED